

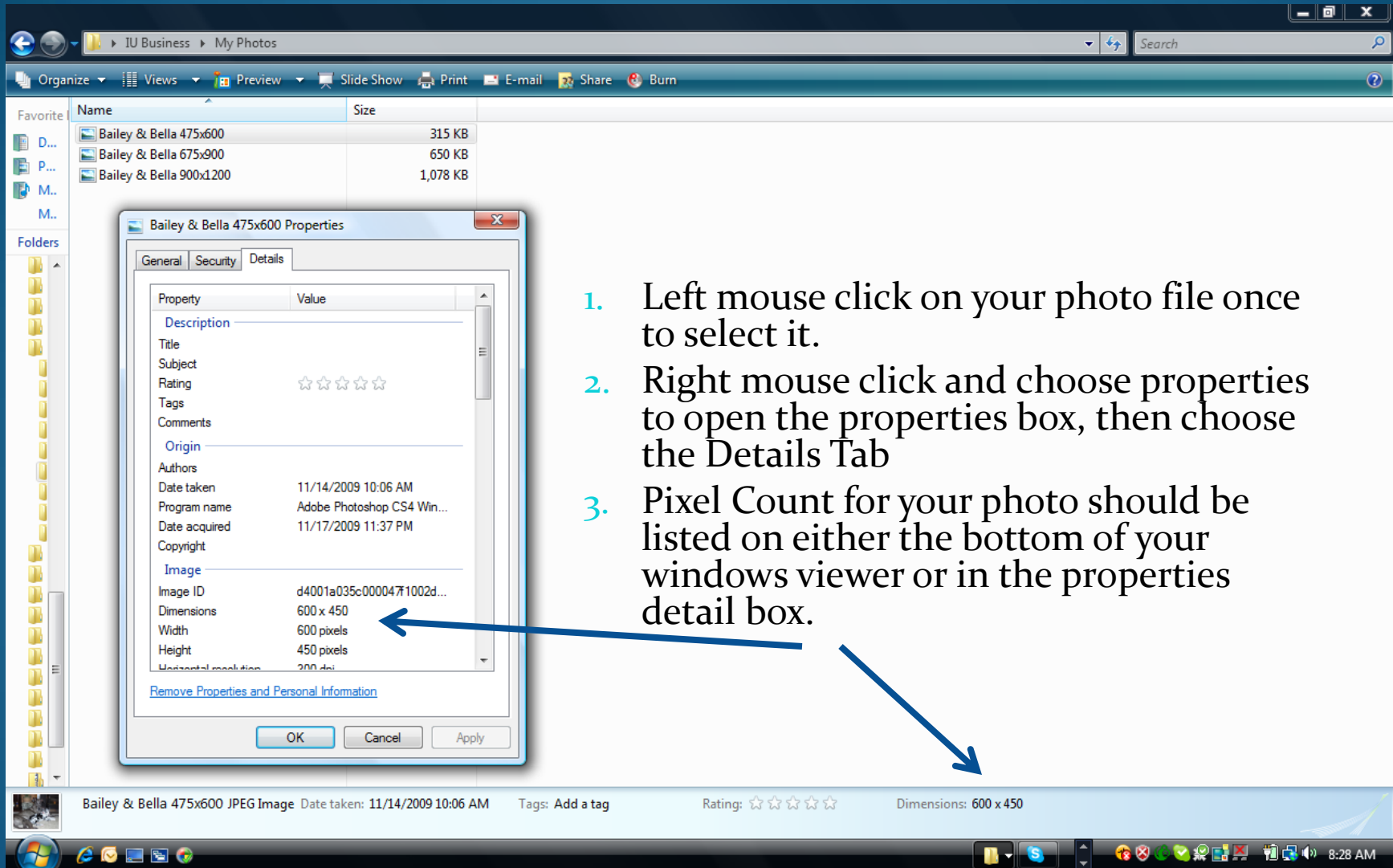
NCTA Legacy Wall Tiles

About Photo Quality

Your digital photographs are made up of pixels, similar to the way we used to see grain on film prints. The more pixels in your photograph the smaller the 'grain' and the larger your photograph can be enlarged.

In these few slides you will learn how to view your image quality and understand how many pixels are required within your photo for them to look good on your legacy wall tile .

NTCA Legacy Wall Tiles



1. Left mouse click on your photo file once to select it.
2. Right mouse click and choose properties to open the properties box, then choose the Details Tab
3. Pixel Count for your photo should be listed on either the bottom of your windows viewer or in the properties detail box.

NCTA Legacy Wall Photo Quality Table

| Legacy Wall Tile Design Options | Photo Size | Required Pixels | Minimum Resolution |
|---------------------------------|------------|-----------------|--------------------|
| Quantity (1) 5"x7" photo | 5"x7" | 750 x 1050 | 150 dpi |
| Quantity (2) 3"x5" photo | 3"x5" | 450 x 750 | 150 dpi |
| Logo or Brand up to 2" x 6" | 2" x 6" | 300 x 900 | 150 dpi |

1. Compare your pixel count to the above table.
2. Locate the tile design you want and compare the pixel count to that of your photo.
3. Insure that your photo, brand, or logo file meet these minimum requirements.
4. If your photo is a different size then use the closest size for comparison or insure that the photograph is prepared at 150 dpi resolution in a larger size.

NCTA and Tile Surface Impressions

Making it Look Good

We are professional artists with years of photo printing experience. We will make your photos look their best on your legacy wall tile.

Place your order, send your photo, and we will do the rest.